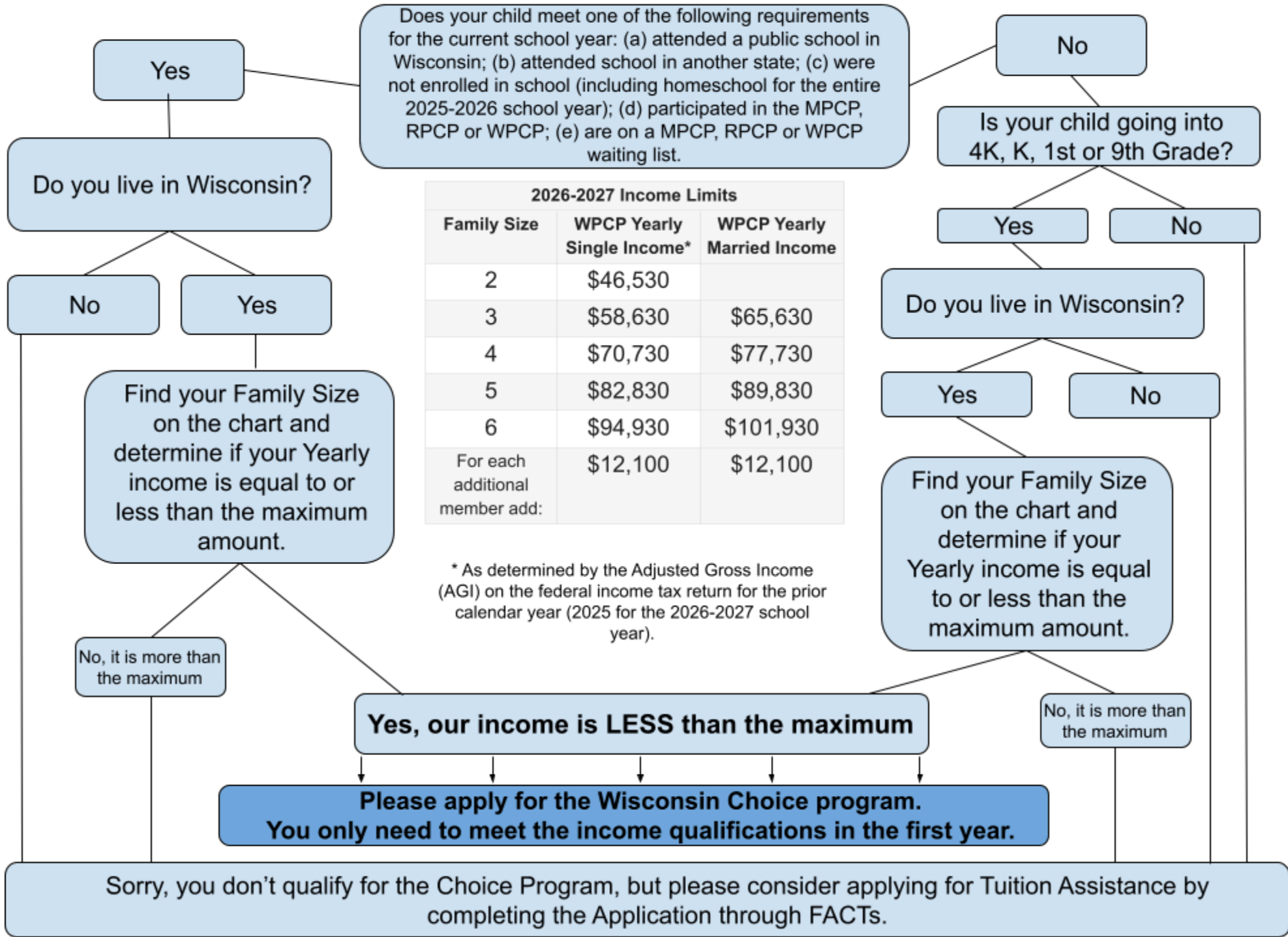


Qualification for Wisconsin Parental Choice Program (WPCP)



Does your child meet one of the following requirements for the current school year: (a) attended a public school in Wisconsin; (b) attended school in another state; (c) were not enrolled in school (including homeschool for the entire 2025-2026 school year); (d) participated in the MPCP, RPCP or WPCP; (e) are on a MPCP, RPCP or WPCP waiting list.

2026-2027 Income Limits		
Family Size	WPCP Yearly Single Income*	WPCP Yearly Married Income
2	\$46,530	
3	\$58,630	\$65,630
4	\$70,730	\$77,730
5	\$82,830	\$89,830
6	\$94,930	\$101,930
For each additional member add:	\$12,100	\$12,100

* As determined by the Adjusted Gross Income (AGI) on the federal income tax return for the prior calendar year (2025 for the 2026-2027 school year).

Please apply for the Wisconsin Choice program. You only need to meet the income qualifications in the first year.

Sorry, you don't qualify for the Choice Program, but please consider applying for Tuition Assistance by completing the Application through FACTs.